

PREPAID SERVICE

Prepaid plans that fit your needs.



A Southern Company



Download new features directly to your phone.

SouthernLINC Wireless offers downloads of digital content and phone features for all prepaid customers. Downloadable features include:

- Ring Tones—Download more than 10,000 distinctive songs, voices and sounds.
- Wallpapers—Choose from 7,500 images of celebrities, hobbies, sports, designs and more for your display screen.
- Games—Browse more than 100 games, including Sudoku, solitaire, blackjack and poker.

All of these features are easily downloaded right to your phone. Simply use the Downloads Menu option on your phone or log onto www.southernlinc.com/downloads.asp.

Costs of digital content and downloads not included with price of plan.



**NO CONTRACT.
NO CREDIT CHECK.
NO MONTHLY BILL.
NO WORRIES.**

If you prefer to pay as you go, or you're keeping an eye on your finances, SouthernLINC Wireless Prepaid is the answer. You get the same great service, only you decide when and how much.

Prepaid Plan	
Unlimited Push to Talk Minutes	\$1.25/day on days you use it
Anytime Cellular Minutes	10¢/minute
Text Messaging	10¢/message (sending or receiving)
Nationwide Long Distance	Included (airtime charges apply)
Basic Voice Mail, Caller ID, Call Waiting, Call Forwarding, Call Hold and 3-Way Calling	Included

PAYGO Prepaid Cellular Plan	
Unlimited Push to Talk and Night & Weekend Cellular Minutes	\$1.50/day on days you use it
Daytime Cellular Minutes	Additional 20¢/minute charge
Text Messaging	Unlimited Incoming 10¢/outgoing
Nationwide Long Distance	Included (airtime charges apply)
Basic Voice Mail, Caller ID, Call Waiting, Call Forwarding, Call Hold and 3-Way Calling	Included

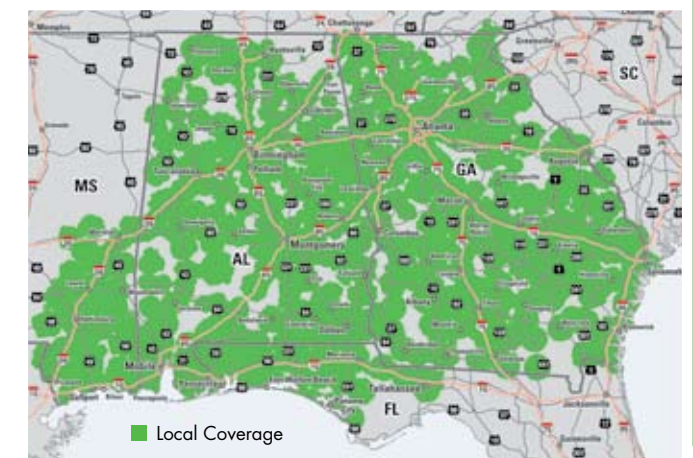
Need more talk time? Here's where to get it.

- Dial #ADD from your SouthernLINC Wireless phone.
- Call 1-888-600-LINC.
- Visit a SouthernLINC Wireless store, Authorized Dealer, Western Union or participating location near you.



For additional details, visit us at southernlinc.com.

Coverage from your backyard to the big city.



Within a wireless coverage area, several factors may affect or interfere with actual service, availability, quality and ability to make, maintain and receive a call or access, such as: network changes, traffic volume, service outages, technical limitations, signal strength, natural and constructed obstructions, upgrades, maintenance, your equipment, terrain, structures, foliage, weather and other conditions. See a SouthernLinc Wireless retail store, dealer or Web site for details.

Across Georgia, Alabama, into Southeastern Mississippi, and even northwest Florida, SouthernLINC Wireless coverage extends where you need it most. So wherever you live, we're right in your backyard.



A Southern Company

southernlinc.com 1-800-818-LINC

Limited time offer. Roaming outside of the SouthernLINC Wireless footprint is not available. Starter fee and positive balance required. Taxes not included. For more information on service limitations see southernlinc.com/promodetails. Nationwide Long Distance applies to calls which are initiated inside of the SouthernLINC Wireless footprint and terminated in the United States or Canada. Airtime charges apply. Weekday Cellular Minutes are defined as Monday through Friday 7:00 a.m. through 8:59 p.m. Nights are defined as 9:00 p.m. to 6:59 a.m. and Weekends are 9:00 p.m. Friday to 6:59 a.m. Monday. Cellular Minutes are rounded to the next minute. ©2008 Southern Communications Services, Inc. d/b/a SouthernLINC Wireless. SCS-4467-02/08